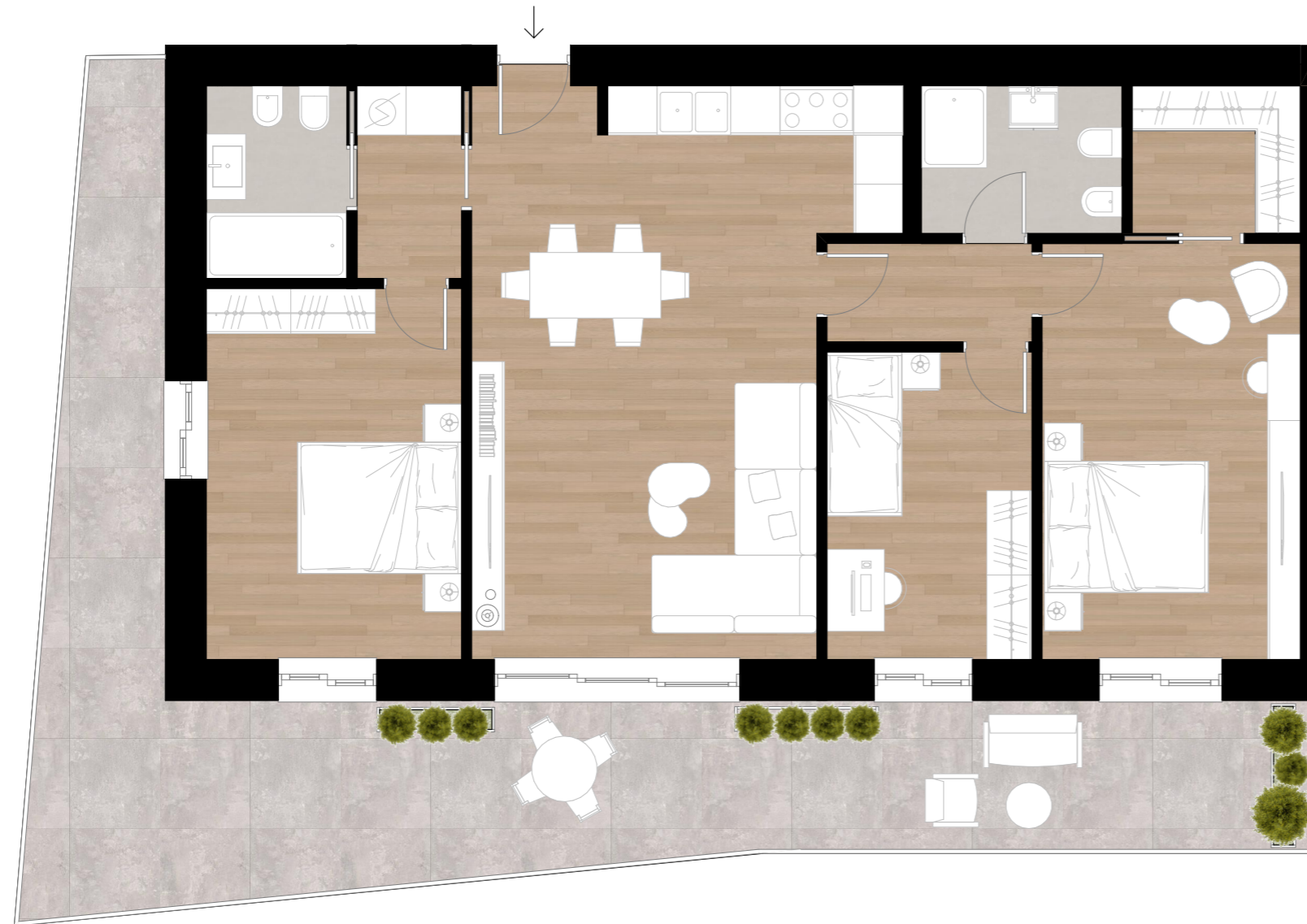
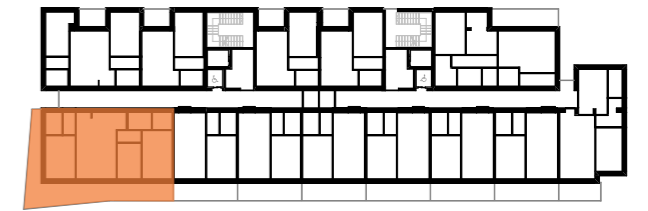


# MERLATA UPTOWN

MILANO SMART DISTRICT



INTERNO: N.5.4



PIANO	:	QUINTO
INTERNO SCALA	:	NORD
TIPOLOGIA	:	QUADRILOCALE
CAMERE	:	3
BAGNI	:	2
SUP. LORDA	:	109m <sup>2</sup>
SUP. BALCONI	:	38m <sup>2</sup>
SUP. COMMERCIALE	:	127m <sup>2</sup>